

COMBINED EVENTS

Decathlon (10 events)

Heptathlon (7 events)

Pentathlon (5 events)

DECATHLON



100 m

30 m



Long jump

30 m



Shot put

30 m



High jump

30 m



400 m

10 hours rest



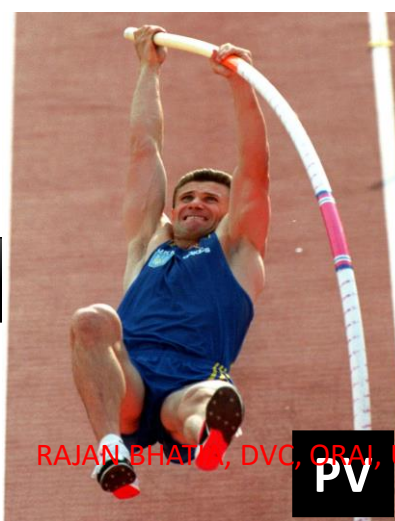
110 m H

30 m



Discus

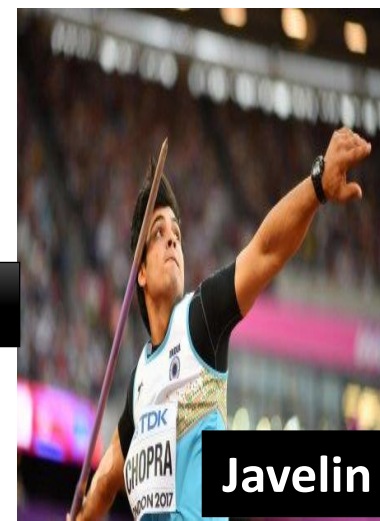
30 m



PV

30 m

RAJAN BHATIA, DVC, ORAI, UP, INDIA



Javelin

30 m



1500 m

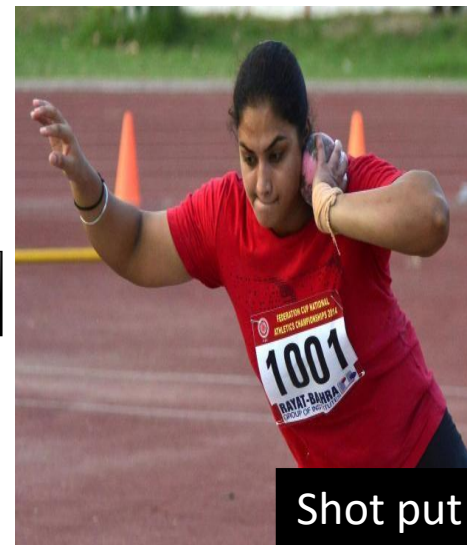
HEPTATHLON



30 m



30 m



30 m



10 hours rest



30 m



30 m



PENTATHLON



Long jump

30 m



1500 m

30 m



Javelin

30 m



Discus

30 m



200 m

QUESTION

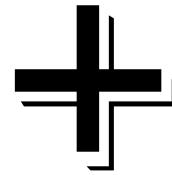


HOW WINNER IS DECIDED ?

ANSWER

We add Performance of all the events and decide the winner

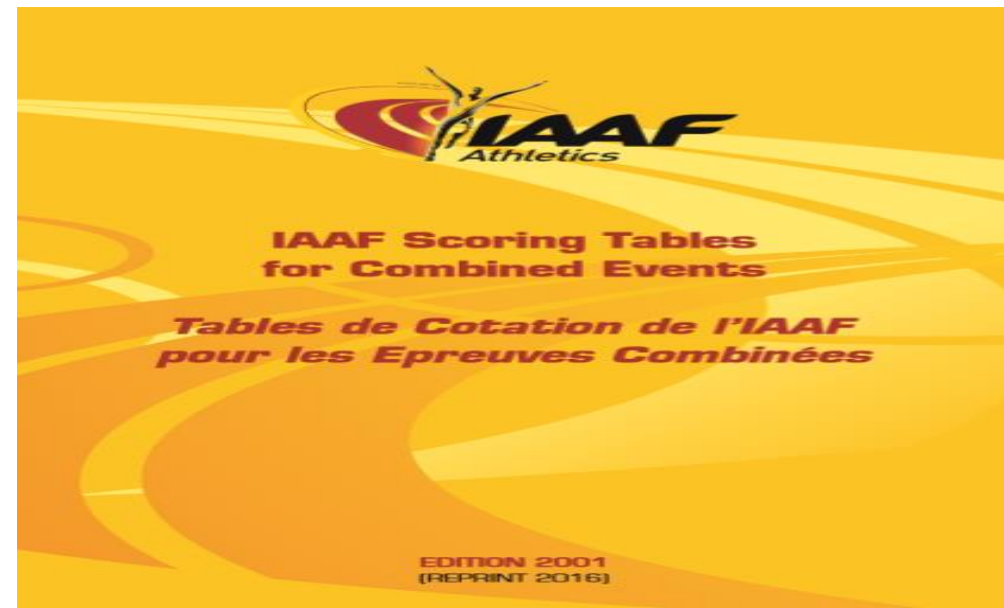
HOW PERFORMANCE OF DIFFERENT EVENTS ARE ADDED ?



ANSWER

Performance of all the events are converted into points with the help of the **Points Table** given by world athletics

RAJAN BHATIA, DVC, ORAI, UP, INDIA





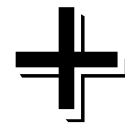
100 m performance is 9.58 s

1202 Points



Long jump performance is 8.05 m

1073 Points



2275 Points after adding two events

What to do, if the Points are same for two athletes after all the events ?

ANSWER

It's a Tie

Give both the athletes same place

If an athlete is absent in any one event ?

ANSWER

He is out of the competition

If an athlete is disqualified in track event due to false start

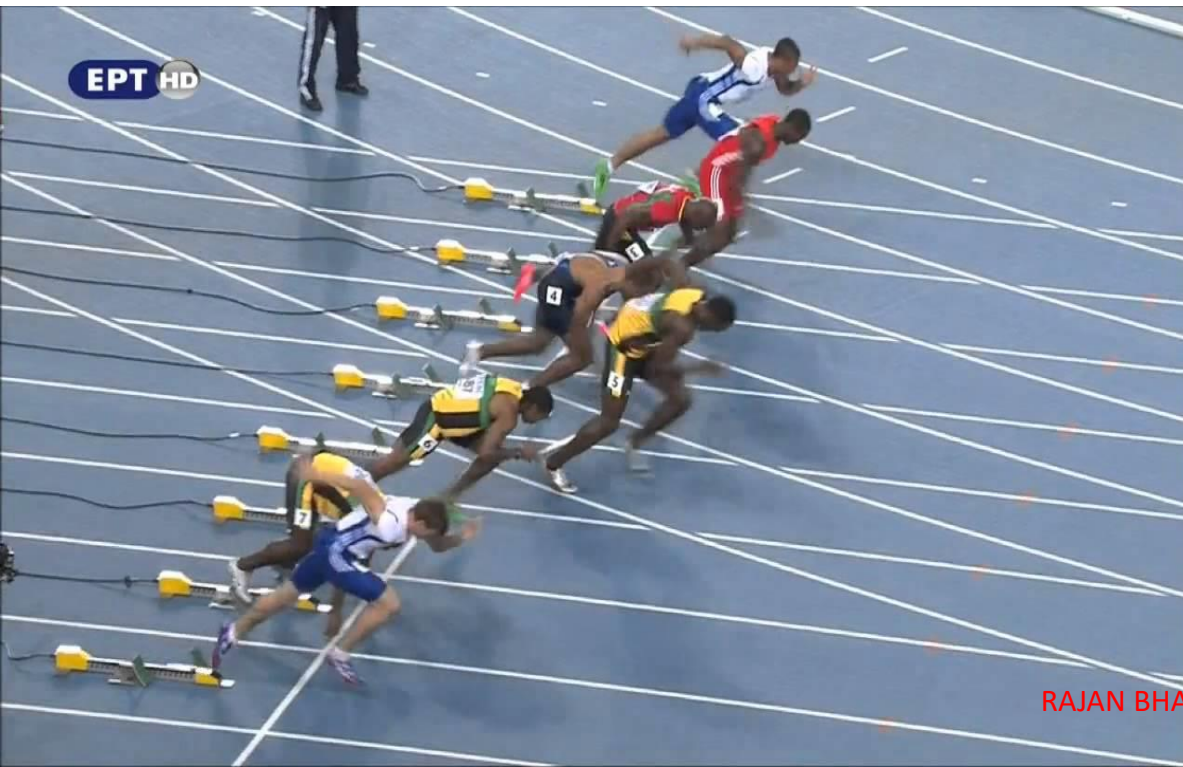
ANSWER

He will continue in rest of the event

Any difference in rules between combined event and regular event ?

ANSWER

One false start per race is allowed

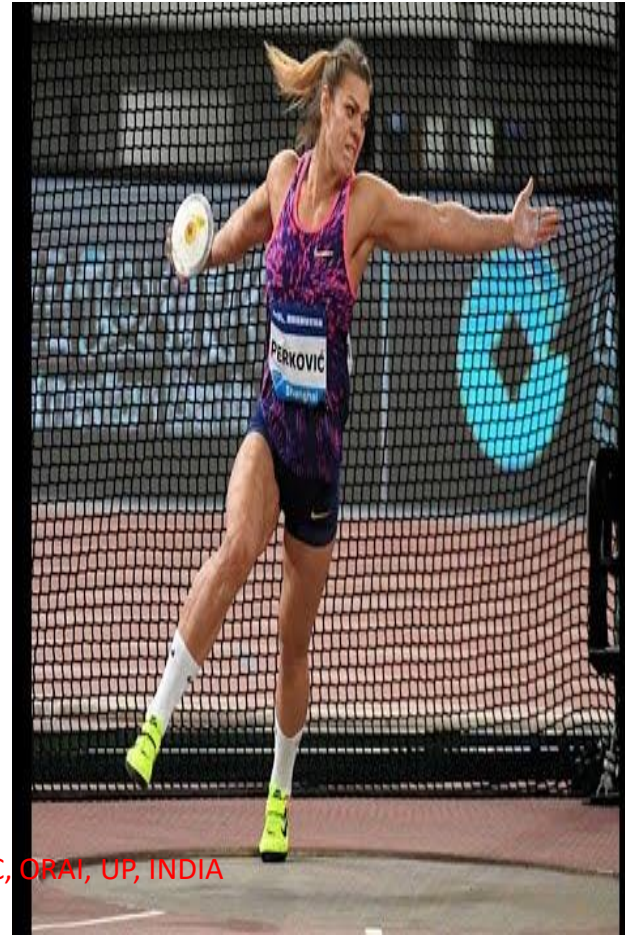


RAJAN BHATIA, DVC, ORAI, UP, INDIA

Only three trials in field events



RAJAN BHATIA, DVC, ORAI, UP, INDIA





Bar will be raised uniformly throughout the vertical jump events
3 cm for high jump and 10 cm for pole vault

If the performance given by an athlete is not mentioned in the scoring table?

ANSWER

The next lower performance mentioned in the scoring table will be awarded

Example: For the women's Javelin Throw there is no points score shown for a **distance of 45.82m.** The nearer shorter distance listed in the table is **45.78m** for which there is a score of 779 points.

For every event the athletes will come from the call room ?

ANSWER

Only for the first event of the day all the athletes will come from call room and for rest of the events they will report to the Combined Event Referee Directly.

They will have events throughout the day so where they will take rest

ANSWER

There is separate rest room for the Combined Event Athletes with lockers, refreshments, water, massage Table and bed etc





THANK YOU

RAJAN BHATIA, DVC, ORAI, UP, INDIA